

What You Need to Know: The Impact of Oracle R12 on Your GL Reporting

Brian Grossweiler,
Midwest Territory Manager, Excel4apps

- About Oracle Release 12
- The R12 Impact on GL Reporting
 - ★ Removal of Client Application Desktop Integrator (ADI)
 - ★ Client ADI vs. Report Manager
- Oracle Reporting Alternatives
- Oracle Validated Integration Solution Alternative
- Next Steps and Q & A

- What is your time frame to upgrade to Oracle R12?
 - ★ 0-3 months
 - ★ 4-6 months
 - ★ 7-12 months
 - ★ Over 1 year
 - ★ I have no plans to upgrade to R12 at this time

- **Removal of Client ADI**

- ★ To be replaced by Web ADI and Report Manager
 - Web ADI – Journal uploads
 - Report Manager – FSG submission
- ★ Advantage: no longer a requirement for client install
- ★ Disadvantages: define new report manager templates for each report & need for ad hoc query tool

| Client ADI Function (EBS v11.x) | Description of Functions | Report Manager/Web ADI Equivalent (EBS R12) | Issues/Complications/Gaps with Web ADI |
|--|--|--|--|
| Financial Report Generation, including batched report processing (via Report Manager) | Users can run financial reports on an ad-hoc/on-demand basis | The Report Manager feature allows the batch processing of reports to a database repository which can then be accessed via the HTML-based pages | All report layout templates need to be re-created in R12 |
| | Using the Report Manager feature of Client ADI, monthly financial reports are generated and stored in a database repository. Users can then access HTML-based pages to collect the published reports | Users can run ad-hoc FSG reports using the 'Ad-hoc FSG Submission' menu item via Report Manager | Although it is somewhat clunky, the report manager feature does allow for drilling for account analysis and transaction data |
| | Reports generated using this function can be published to Excel, HTML, PDF and Text formats | Reports generated using either function can be published to Excel®, HTML, PDF and Text formats | The process to submit an FSG report involves a 5-step process, which increases the time to submit a report when compared to Client ADI |

| Client ADI Function (EBS v11.x) | Description of Functions | Report Manager/Web ADI Equivalent (EBS R12) | Issues/Complications/Gaps with Web ADI |
|--|---|--|---|
| Transactional Drill Down/Through (Account Analysis) | Client ADI offers transactional drill-through functionality from financial reports when presented in Excel® | Delivered via an /html form, this feature is now called "Account Analysis and Drilldown" which can be used as a stand-alone query tool or in conjunction with the financial report drill-through feature | Account analysis feature is currently only available with reports published via Report Manager |
| | This feature allows users to identify the accounts and corresponding transactions that make up a selected line/row on a financial report | | Users have limited ability to sort the data returned by a search, for example, users cannot search by the PTD (Period-To-Date) column, which makes data analysis and interrogation very cumbersome and time-consuming |
| COA Graphical Hierarchy View | With a graphical view of the COA hierarchy, users can take advantage of this Client ADI feature to understand and traverse the structure of each segment in the COA | This function is now a Java-based form accessed via the GL module | The form used to perform this function is set under the configuration (i.e. Setup) menu in the GL module, which is only accessible by system administrators and authorised users (i.e. Business Analysts) |
| | This feature is particularly useful for new employees that need to become familiar with the structure of the COA | | In order for the feature to be available to all users, the form must be moved to an area within the GL menu where all users have access |

- **Standard Request Submission**, an alternative for ad-hoc FSG submission
- Allow users to produce any FSG report using the “Program – Publish FSG Report” request
- Complications:
 - ★ No support for multi-tabbed workbooks when using content-set override
 - ★ Report template layouts are built using MS Word
 - ★ All Excel® editor-built templates will now need to be rebuilt with MS Word

- **Hyperion or OBIEE (Oracle Business Intelligence Enterprise Edition)**
- Installation can be time-consuming and costly

- **GL Wand, by Excel4apps**
- Financial reporting tool designed to easily and securely deliver real-time ERP data directly from Oracle using Excel®

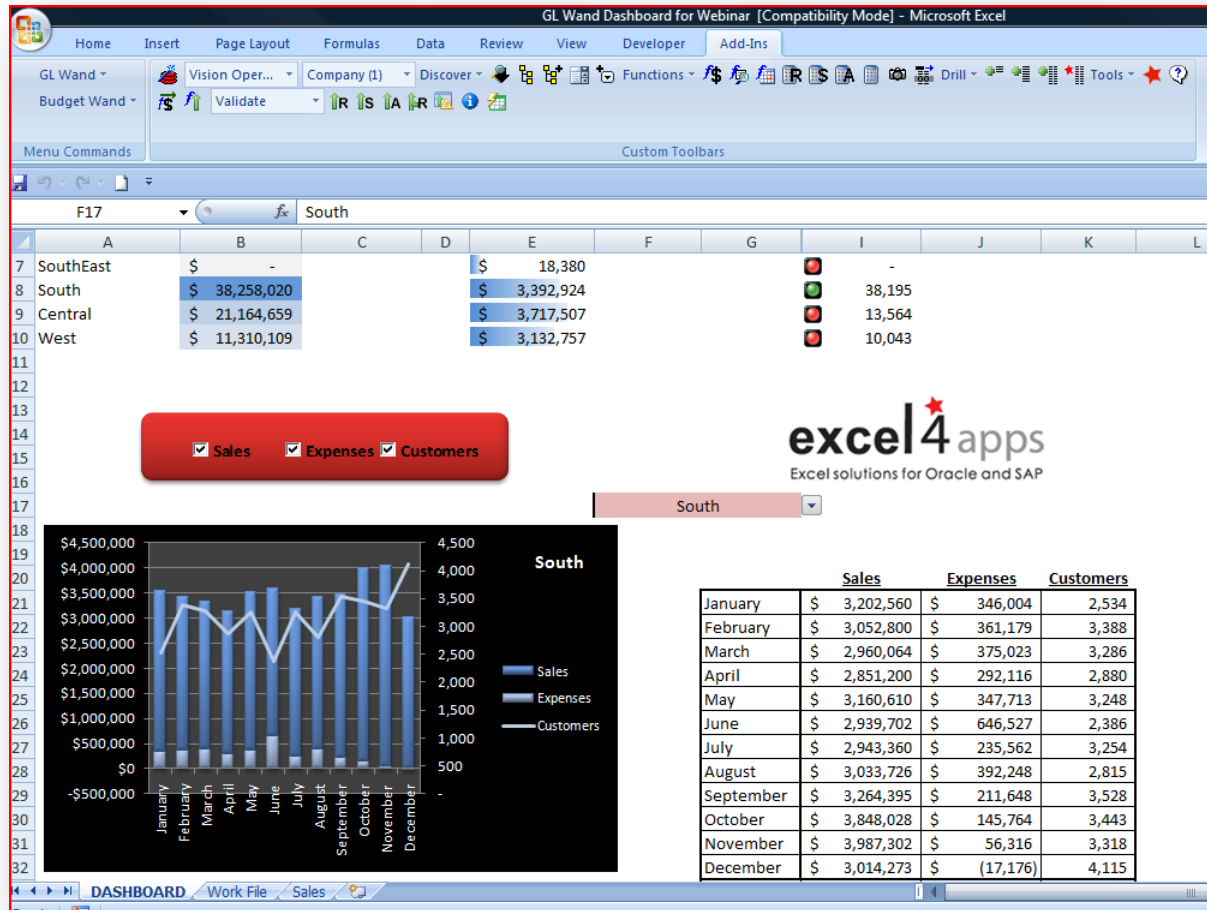
The image displays two overlapping screenshots of the Excel4apps interface. The top screenshot shows the Excel ribbon with the 'GL Wand' and 'Budget Wand' tabs selected. The bottom screenshot shows the 'Login' dialog box for Oracle E-Business Suite, with the following details:

- Username: SCOTT.STOLLWERK
- Password: [Redacted]
- Copyright 2004 Oracle Corporation. All rights reserved.

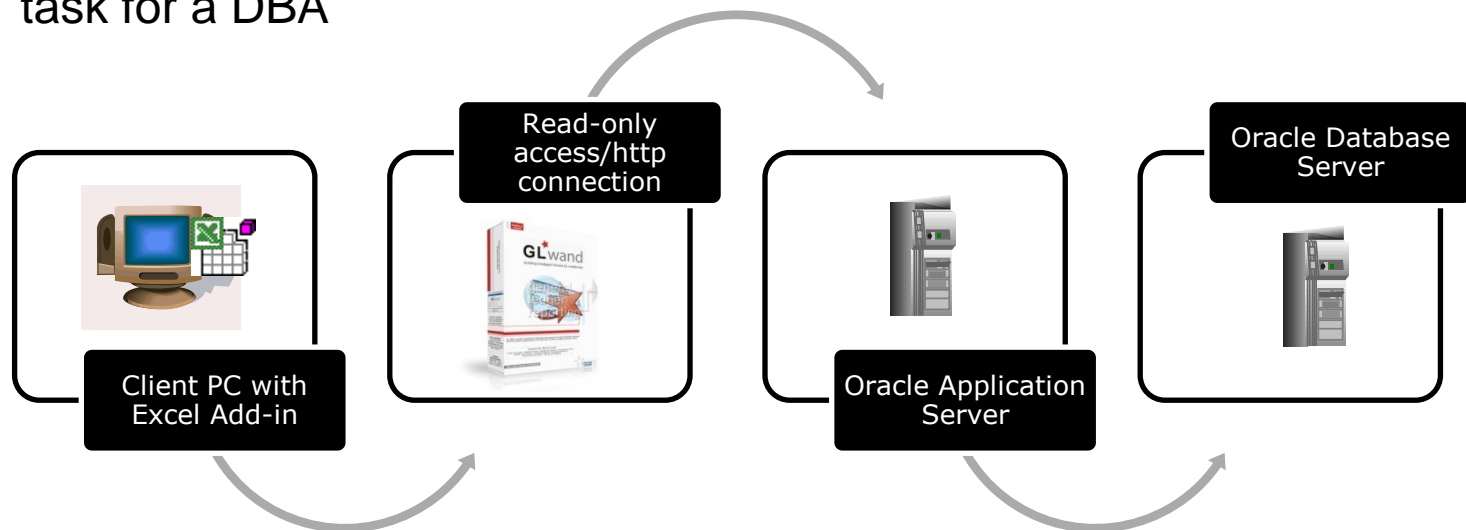
Below the login dialog, the 'Get Balance Wizard - Vision Operations: (USA)' dialog box is visible, containing the following configuration:

- Parameters:**
 - Period: [Empty]
 - Balance Type: PTD
 - Currency: USD
 - Translated Flag: E
 - Actual Flag: A
 - Bud/Enc Name: [Empty]
- Segments:**
 - Company: 01
 - Department: %
 - Account: %
 - Sub-Account: 0000
 - Product: 000
- Options:**
 - Journal Source: [Empty]
 - Journal Category: [Empty]
 - Add the set of books ID to the Get Balance function

| Journal Drill Down Results (Nov-02 - PTD - USD - Vision Operations (USA) - 10 Aug 2011 11:55:27) | | | | | | | | | | | |
|--|------------------------------------|----------------|------------------|-------------|---------------|--------------------------|---------------------|--------------|--------------|--------------|--------------|
| Effective Date | Journal Name | Journal Source | Journal Category | Period Name | Currency Code | Currency Conversion Rate | Journal Line Number | Entered Dr | Entered Cr | Accounted Dr | Accounted Cr |
| 01-000-1240-0000-000 | | | | | | | | | | | |
| Opening Balance: -212,720.05 | | | | | | | | | | | |
| 1-Nov-02 | Trade Receipts USD | Receivables | Trade Receipts | Nov-02 | USD | 1.00 | 4 | 3,152,153.97 | | 3,152,153.97 | |
| 1-Nov-02 | Trade Receipts USD | Receivables | Trade Receipts | Nov-02 | USD | 1.00 | 5 | | 3,152,153.97 | | 3,152 |
| 1-Nov-02 | Trade Receipts CAD | Receivables | Trade Receipts | Nov-02 | CAD | 1.00 | 3 | 51,850.00 | | 33,184.00 | |
| 1-Nov-02 | Trade Receipts CAD | Receivables | Trade Receipts | Nov-02 | CAD | 1.00 | 4 | | 51,850.00 | | 33 |
| 4-Nov-02 | Trade Receipts FRF | Receivables | Trade Receipts | Nov-02 | FRF | 1.00 | 3 | 20,625.00 | | 3,082.61 | |
| 4-Nov-02 | Trade Receipts FRF | Receivables | Trade Receipts | Nov-02 | FRF | 1.00 | 4 | | 20,625.00 | | 3 |
| 4-Nov-02 | Trade Receipts USD | Receivables | Trade Receipts | Nov-02 | USD | 1.00 | 3 | 1,595,153.24 | | 1,595,153.24 | |
| 4-Nov-02 | Trade Receipts USD | Receivables | Trade Receipts | Nov-02 | USD | 1.00 | 4 | | 1,597,183.58 | | 1,597 |
| 4-Nov-02 | Trade Receipts CAD | Receivables | Trade Receipts | Nov-02 | CAD | 1.00 | 3 | 42,075.00 | | 26,928.00 | |
| 4-Nov-02 | Trade Receipts CAD | Receivables | Trade Receipts | Nov-02 | CAD | 1.00 | 4 | | 42,075.00 | | 26 |
| 6-Nov-02 | Trade Receipts USD | Receivables | Trade Receipts | Nov-02 | USD | 1.00 | 4 | 2,990,562.82 | | 2,990,562.82 | |
| 6-Nov-02 | Trade Receipts USD | Receivables | Trade Receipts | Nov-02 | USD | 1.00 | 5 | | 2,990,562.82 | | 2,990 |
| 6-Nov-02 | Trade Receipts FRF | Receivables | Trade Receipts | Nov-02 | FRF | 1.00 | 3 | 18,750.00 | | 2,802.37 | |
| 6-Nov-02 | Trade Receipts FRF | Receivables | Trade Receipts | Nov-02 | FRF | 1.00 | 4 | | 18,750.00 | | 2 |
| 6-Nov-02 | Trade Receipts AUD | Receivables | Trade Receipts | Nov-02 | AUD | 1.00 | 3 | 15,000.00 | | 7,800.00 | |
| 6-Nov-02 | Trade Receipts AUD | Receivables | Trade Receipts | Nov-02 | AUD | 1.00 | 4 | | 15,000.00 | | 7 |
| 6-Nov-02 | Trade Receipts CAD | Receivables | Trade Receipts | Nov-02 | CAD | 1.00 | 3 | 75,800.00 | | 48,512.00 | |
| 6-Nov-02 | Trade Receipts CAD | Receivables | Trade Receipts | Nov-02 | CAD | 1.00 | 4 | | 75,800.00 | | 48 |



- **GL Wand Installation Process**
- Two components required to install and operate GL Wand:
 - ★ The Excel Add-in – installed via an MSI or Windows-installer file
 - ★ Server-Side Install – requires the installation of a Java servlet by a DBA, which takes about 30 minutes to configure (normally a “set-and-forget” task for a DBA)



- **About Excel4apps**

Excel4apps is a best-in-class provider of Excel-based reporting and budget-loading software for Oracle and SAP. Designed for finance professionals, its award-winning GL Wand, Reports Wand, and Budget Wand products easily and securely deliver real-time ERP data using Microsoft Excel® to save reporting time and effort. Excel4apps serves over 8,000 Oracle and SAP users worldwide, with offices in the United States, United Kingdom, Australia, United Arab Emirates, and South Africa.

To schedule a demonstration and try a free trial today,

- ★ Call 919-847-6166
- ★ E-mail brian.grossweiler@excel4apps.com
- ★ Visit www.excel4apps.com/oracle